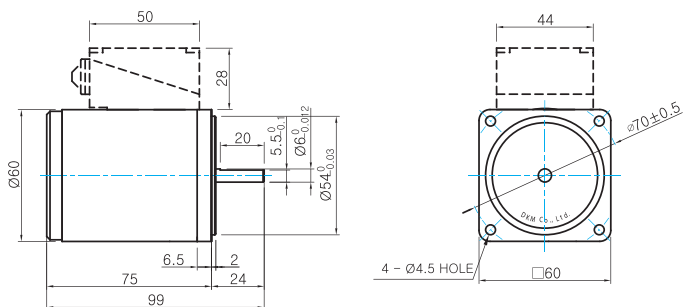


Dimensions

MOTOR ONLY

- MOTOR MODEL: 6RDD□-6(-T) (NO FAN)



MOTOR OUTPUT SHAFT

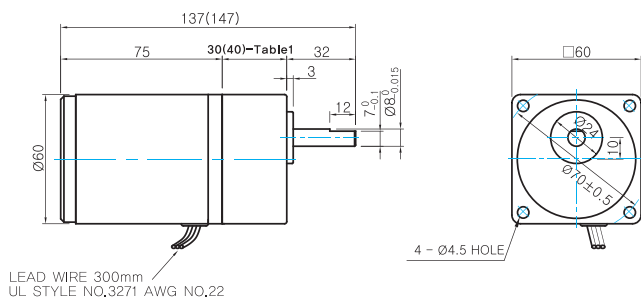
MODEL	SPEC
D-CUT TYPE	

GEARED MOTOR

G TYPE GEARHEAD

- MOTOR MODEL: 6RDG□-6G (NO FAN)

- GEARHEAD MODEL: 6GBD□MH



LEAD WIRE 300mm
UL STYLE NO.3271 AWG NO.22

GEARHEAD OUTPUT SHAFT

MODEL	SPEC
D-CUT TYPE	

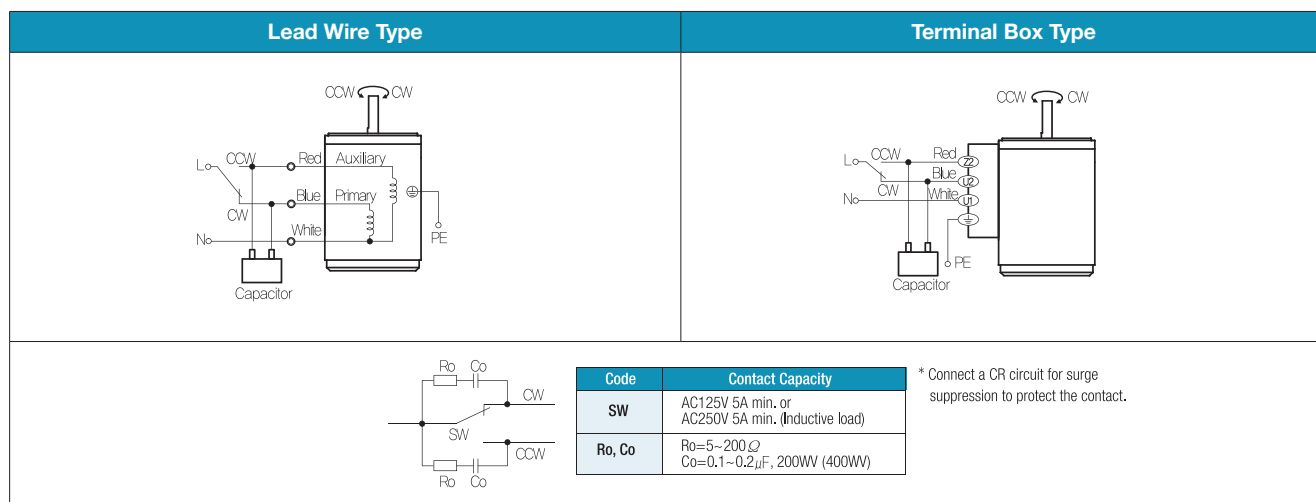
WEIGHT

PART	WEIGHT(Kg)	
MOTOR	0.7	
GEAR HEAD	6GBD3MH ~ 6GBD18MH	0.3
	6GBD20MH ~ 6GBD40MH	0.32
	6GBD50MH ~ 6GBD250MH	0.34

30(40)-Table1

SIZE(mm)	GEAR RATIO
30	6GBD3MH - 6GBD18MH
40	6GBD20MH - 6GBD250MH

Connection Diagrams



- The direction of motor rotation is as viewed from the shaft end of the motor.
- CW represents the clockwise direction, while CCW represents the counterclockwise direction.
- During operation it is available to change the rotating direction by turning the switch to CW or CCW.