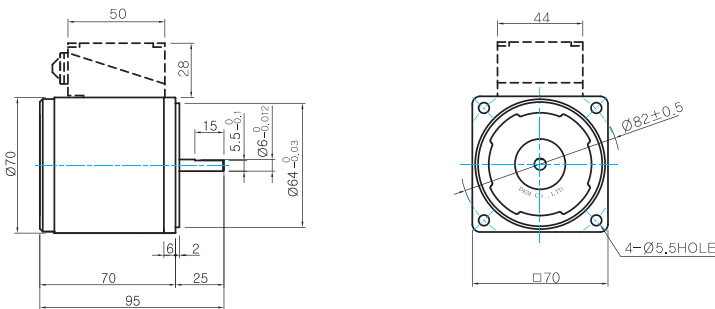


Dimensions

MOTOR ONLY

- MOTOR MODEL: 7RDD□-10(-T) (NO FAN)



MOTOR OUTPUT SHAFT

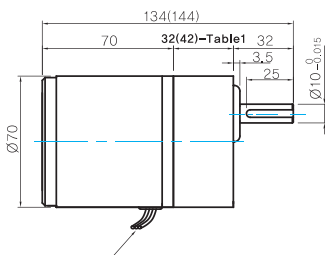
MODEL	SPEC
D-CUT TYPE	

GEARED MOTOR

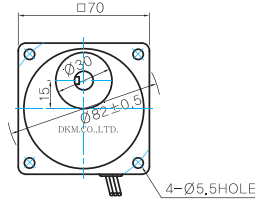
G TYPE GEARHEAD

- MOTOR MODEL: 7RDG□-10G (NO FAN)

- GEARHEAD MODEL: 7GBK□BMH



LEAD WIRE 300mm
UL STYLE NO.3271 AWG NO.22



GEARHEAD OUTPUT SHAFT

MODEL	SPEC
KEY TYPE	

KEY SPEC

MOTOR	

WEIGHT

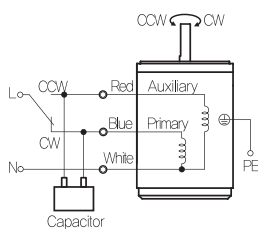
PART	WEIGHT(Kg)
MOTOR	0,84
GEAR HEAD	7GBK3BMH ~ 7GBK18BMH: 0,36 7GBK25BMH ~ 7GBK30BMH: 0,44 7GBK36MH ~ 7GBK180MH: 0,5

32(42)-Table1

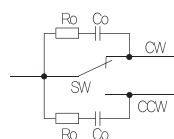
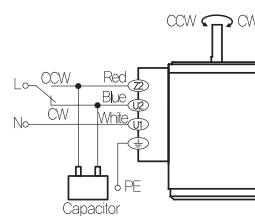
SIZE(mm)	GEAR RATIO
32	7GBK3BMH - 7GBK18BMH
42	7GBK25BMH - 7GBK180BMH

Connection Diagrams

Lead Wire Type



Terminal Box Type



Code	Contact Capacity
SW	AC125V 5A min. or AC250V 5A min. (Inductive load)
Ro, Co	Ro=5~200Ω Co=0.1~0.2μF, 200WV (400WV)

* Connect a CR circuit for surge suppression to protect the contact.

- The direction of motor rotation is as viewed from the shaft end of the motor.
- CW represents the clockwise direction, while CCW represents the counterclockwise direction.
- During operation it is available to change the rotating direction by turning the switch to CW or CCW.