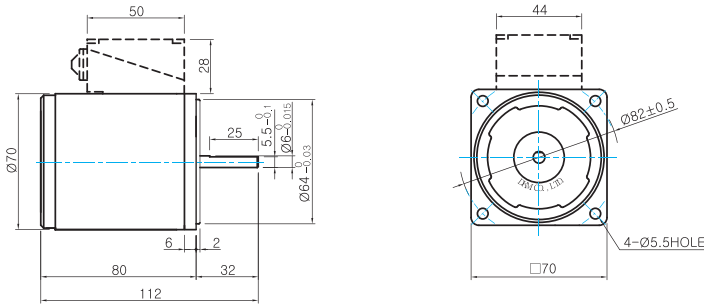


Dimensions

MOTOR ONLY

- MOTOR MODEL: 7RDD□-15(-T) (NO FAN)



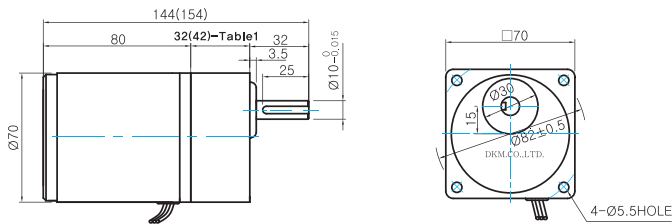
MOTOR OUTPUT SHAFT

MODEL	SPEC
D-CUT TYPE	

GEARED MOTOR

G TYPE GEARHEAD

- MOTOR MODEL: 7RDG□-15G (NO FAN)
- GEARHEAD MODEL: 7GBK□BMH



LEAD WIRE 300mm
UL STYLE NO.3271 AWG NO.22

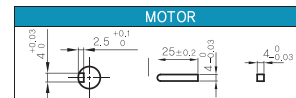
WEIGHT

PART	WEIGHT(Kg)
MOTOR	1.04
GEAR HEAD	7GBK3BMH ~ 7GBK18BMH: 0.36 7GBK25BMH ~ 7GBK30BMH: 0.44 7GBK36MH ~ 7GBK180MH: 0.5

GEARHEAD OUTPUT SHAFT

MODEL	SPEC
KEY TYPE	

KEY SPEC



32(42)-Table1

SIZE(mm)	GEAR RATIO
32	7GBK3BMH - 7GBK18BMH
42	7GBK25BMH - 7GBK180BMH

Connection Diagrams

Lead Wire Type	Terminal Box Type						
	<table border="1" style="width: 100%;"> <thead> <tr> <th>Code</th> <th>Contact Capacity</th> </tr> </thead> <tbody> <tr> <td>SW</td> <td>AC125V 5A min. or AC250V 5A min. (Inductive load)</td> </tr> <tr> <td>Ro, Co</td> <td>Ro=5-200Ω Co=0.1-0.2μF, 200WV (400WV)</td> </tr> </tbody> </table> <p>* Connect a CR circuit for surge suppression to protect the contact.</p>	Code	Contact Capacity	SW	AC125V 5A min. or AC250V 5A min. (Inductive load)	Ro, Co	Ro=5-200Ω Co=0.1-0.2μF, 200WV (400WV)
Code	Contact Capacity						
SW	AC125V 5A min. or AC250V 5A min. (Inductive load)						
Ro, Co	Ro=5-200Ω Co=0.1-0.2μF, 200WV (400WV)						

- The direction of motor rotation is as viewed from the shaft end of the motor.
- CW represents the clockwise direction, while CCW represents the counterclockwise direction.
- During operation it is available to change the rotating direction by turning the switch to CW or CCW.