

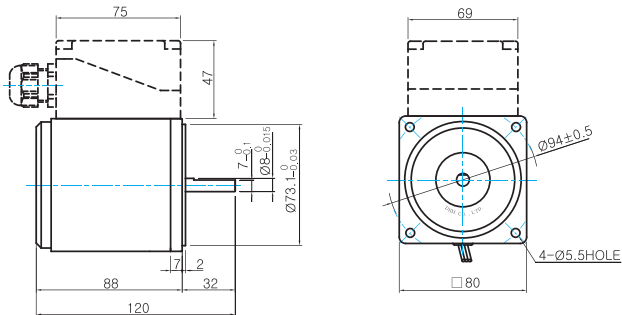
B AC Motors

Reversible Motor 25W(□80mm)

Dimensions

MOTOR ONLY

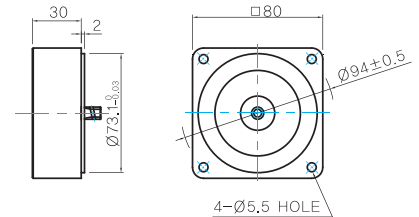
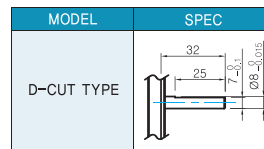
- MOTOR MODEL: 8RDD□-25(-T) (NO FAN)



INTER-DECIMAL GEARHEAD

- MODEL: 8XD10M□

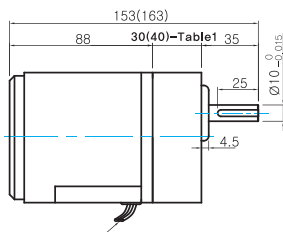
MOTOR OUTPUT SHAFT



GEARED MOTOR

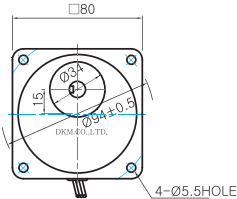
G TYPE GEARHEAD

- MOTOR MODEL: 8RDG□-25G (NO FAN)

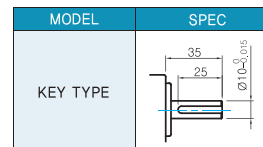


LEAD WIRE 300mm
UL STYLE NO.3271 AWG NO.22

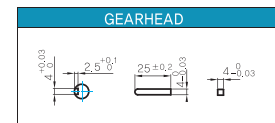
- GEARHEAD MODEL: 8GBK□BMH



GEARHEAD OUTPUT SHAFT



KEY SPEC

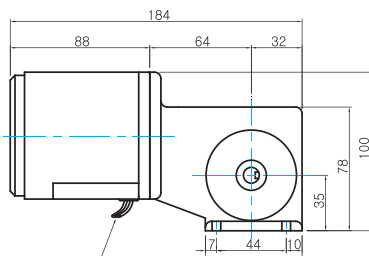


30(40)-Table1

SIZE(mm)	GEAR RATIO
30	8GBK3BMH - 8GBK18BMH
40	8GBK25BMH - 8GBK360BMH

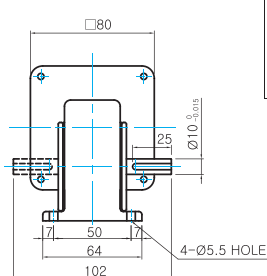
W TYPE GEARHEAD

- MOTOR MODEL: 8RDG□-25W (NO FAN)

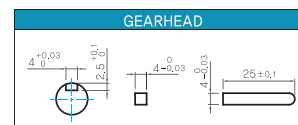


LEAD WIRE 300mm
UL STYLE NO.3271 AWG NO.22

- GEARHEAD MODEL: 8WD□BL/BR/BRL



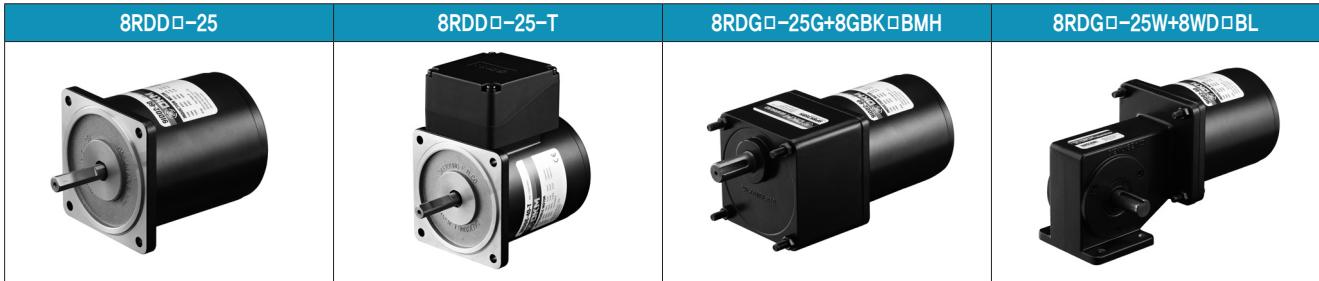
KEY SPEC



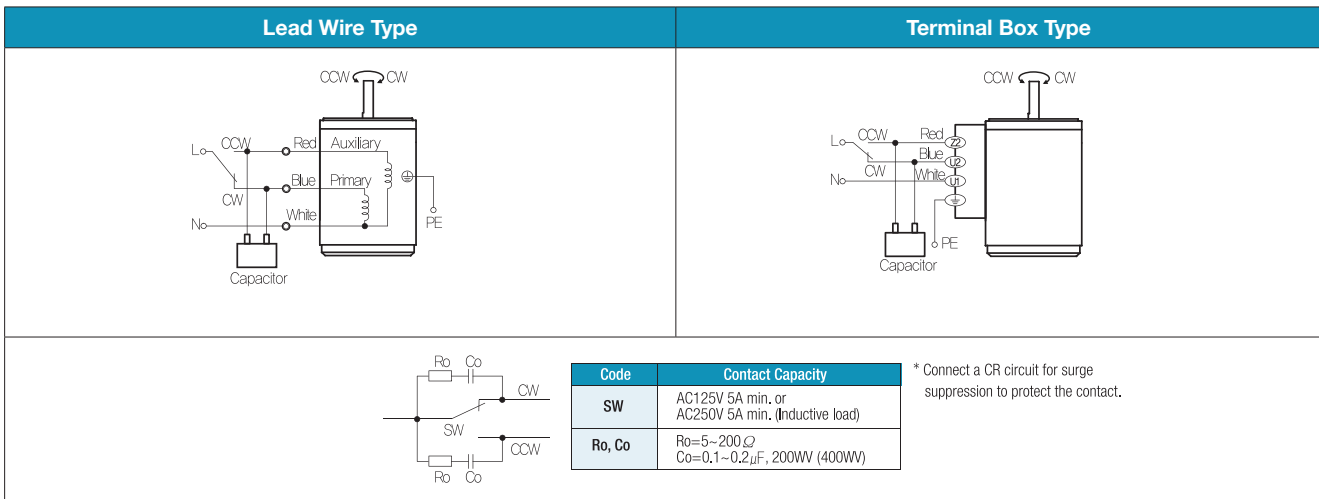
WEIGHT

PART	WEIGHT(Kg)	
MOTOR	1.6	
GEAR HEAD	8GBK3BMH ~ 8GBK18BMH	0.48
	8GBK25BMH ~ 8GBK30BMH	0.61
	8GBK36BMH ~ 8GBK180BMH	0.67
	8GBK200BMH ~ 8GBK360BMH	0.63
	8WD□BL/BR/BRL	0.67
	8XD10M□	0.44

Motor Images



Connection Diagrams



- 1) The direction of motor rotation is as viewed from the shaft end of the motor.
- 2) CW represents the clockwise direction, while CCW represents the counterclockwise direction.
- 3) During operation it is available to change the rotating direction by turning the switch to CW or CCW.