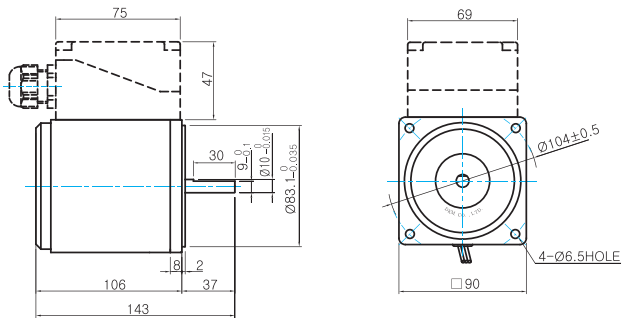


## Dimensions

### MOTOR ONLY

- MOTOR MODEL: 9RDD□-40(-T) (NO FAN)

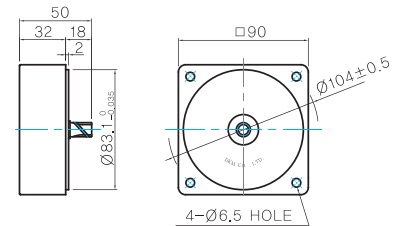


### MOTOR OUTPUT SHAFT

MODEL	SPEC
D-CUT TYPE	
9RDD□-40	
KEY TYPE	
9RDK□-40	

### INTER-DECIMAL GEARHEAD

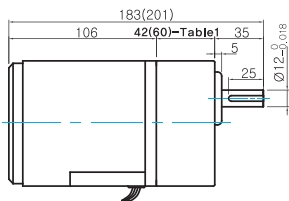
- MODEL: 9XD10M□



## GEARED MOTOR

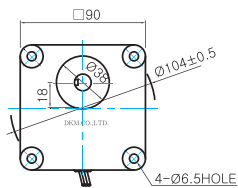
### G TYPE GEARHEAD

- MOTOR MODEL: 9RDG□-40G (NO FAN)



LEAD WIRE 300mm  
UL STYLE NO.3271 AWG NO.22

- GEARHEAD MODEL: 9GBK□BMH



### GEARHEAD OUTPUT SHAFT

MODEL	SPEC
KEY TYPE	

### KEY SPEC

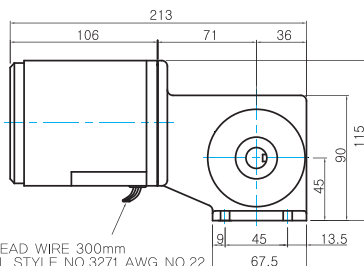
GEARHEAD	

- 42(60)-Table1

SIZE(mm)	GEAR RATIO
42	9GBK2BMH - 9GBK15BMH
60	9GBK18BMH - 9GBK180BMH

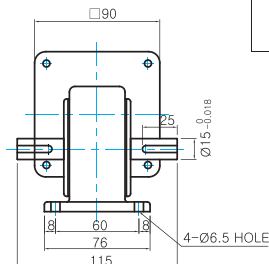
### W TYPE GEARHEAD

- MOTOR MODEL: 9RDG□-40W (NO FAN)



LEAD WIRE 300mm  
UL STYLE NO.3271 AWG NO.22

- GEARHEAD MODEL: 9WD□BL/BR/BRL



### KEY SPEC

GEARHEAD	

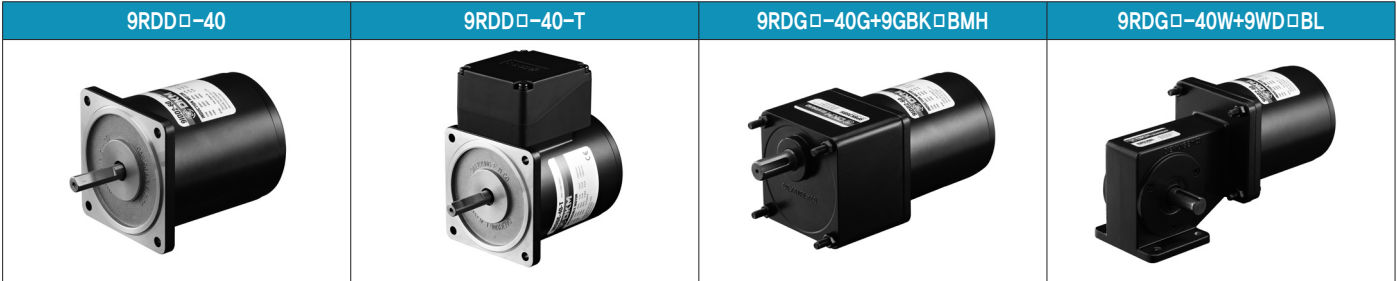
### WEIGHT

PART		WEIGHT(kg)
MOTOR		2.4
GEAR HEAD	9GBK2BMH ~ 9GBK15BMH	0.67
	9GBK18BMH ~ 9GBK30BMH	0.96
	9GBK36BMH ~ 9GBK180BMH	1.07
	9WD□BL/BR/BRL	1.0
	9XD10M□	0.5

# B AC Motors

## Reversible Motor 40W(□90mm)

### Motor Images



### Connection Diagrams

Lead Wire Type	Terminal Box Type						
	<table border="1"> <thead> <tr> <th>Code</th> <th>Contact Capacity</th> </tr> </thead> <tbody> <tr> <td>SW</td> <td>AC125V 5A min. or AC250V 5A min. (Inductive load)</td> </tr> <tr> <td>Ro, Co</td> <td>Ro=5~200Ω Co=0.1~0.2μF, 200W (400W)</td> </tr> </tbody> </table> <p>* Connect a CR circuit for surge suppression to protect the contact.</p>	Code	Contact Capacity	SW	AC125V 5A min. or AC250V 5A min. (Inductive load)	Ro, Co	Ro=5~200Ω Co=0.1~0.2μF, 200W (400W)
Code	Contact Capacity						
SW	AC125V 5A min. or AC250V 5A min. (Inductive load)						
Ro, Co	Ro=5~200Ω Co=0.1~0.2μF, 200W (400W)						

- 1) The direction of motor rotation is as viewed from the shaft end of the motor.
- 2) CW represents the clockwise direction, while CCW represents the counterclockwise direction.
- 3) During operation it is available to change the rotating direction by turning the switch to CW or CCW.