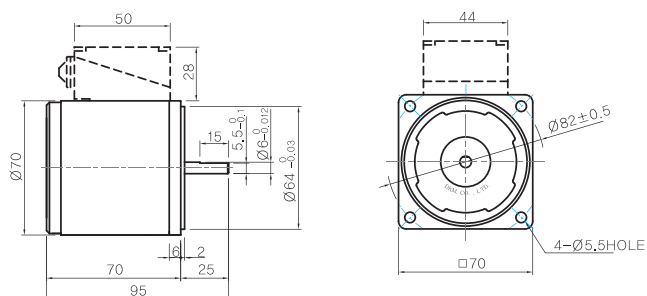


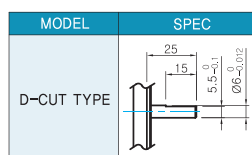
Dimensions

MOTOR ONLY

● MOTOR MODEL: 7IDD□-6(-T) (NO FAN)



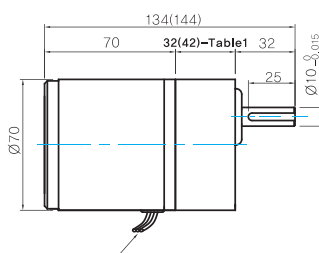
● MOTOR OUTPUT SHAFT



GEARED MOTOR

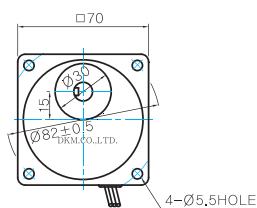
G TYPE GEARHEAD

● MOTOR MODEL:
7IDG□-6G (NO FAN)

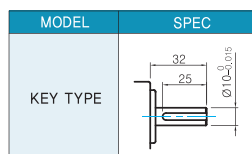


LEAD WIRE 300mm
UL STYLE NO.3271 AWG NO.22

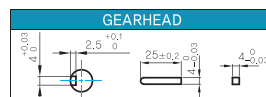
● GEARHEAD MODEL:
7GBK□BMH



● GEARHEAD OUTPUT SHAFT



● KEY SPEC



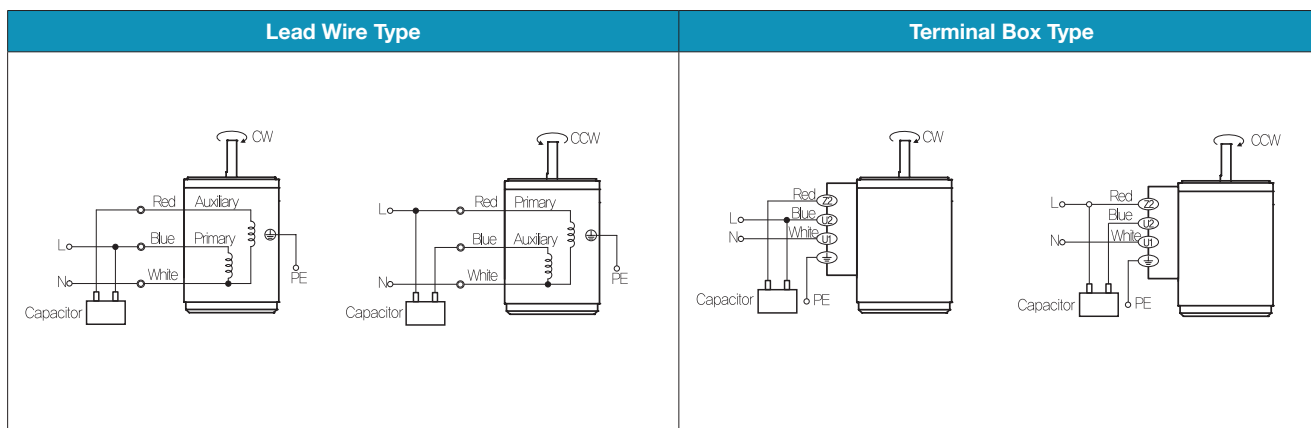
WEIGHT

| PART | WEIGHT(Kg) |
|---------------------------|------------|
| MOTOR | 0,84 |
| GEAR HEAD | |
| 7GBK3BMH - 7GBK18BMH | 0,36 |
| 7GBK25BMH - 7GBK30BMH | 0,44 |
| 7GBK36BMH - 7GBK180BMH | 0,5 |

● 32(42)-Table1

| SIZE(mm) | GEAR RATIO |
|----------|------------------------|
| 32 | 7GBK3BMH - 7GBK18BMH |
| 42 | 7GBK25BMH - 7GBK180BMH |

Connection Diagrams



- 1) The direction of motor rotation is as viewed from the shaft end of the motor. 2) CW represents the clockwise direction, while CCW represents the counterclockwise direction.
- 3) Change the direction of single phase motor rotation only after bringing the motor to a stop. If an attempt is made to change the direction of rotation while the motor is rotating, the motor may ignore the reversing command or change its direction after some delay.