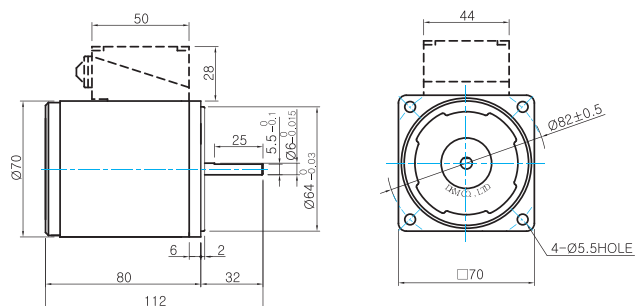


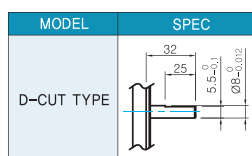
Dimensions

MOTOR ONLY

- MOTOR MODEL: 7IDD□-15(-T) (NO FAN)



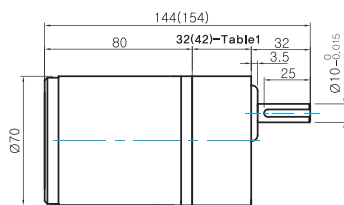
MOTOR OUTPUT SHAFT



GEARED MOTOR

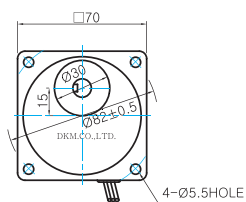
G TYPE GEARHEAD

- MOTOR MODEL: 7IDG□-15G (NO FAN)

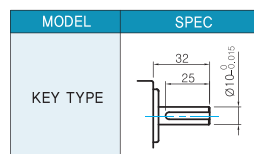


LEAD WIRE 300mm
UL STYLE NO.3271 AWG NO.22

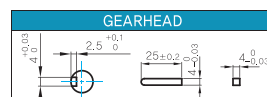
- GEARHEAD MODEL: 7GBK□BMH



GEARHEAD OUTPUT SHAFT



KEY SPEC



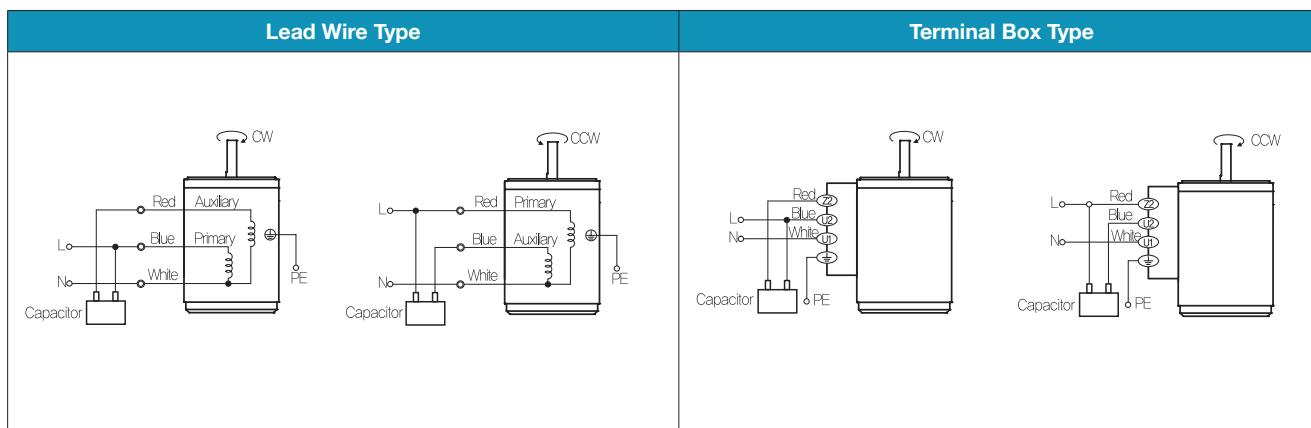
WEIGHT

PART	WEIGHT(Kg)
MOTOR	1.04
7GBK3BMH - 7GBK18BMH	0.36
7GBK25BMH - 7GBK30BMH	0.44
7GBK36BMH - 7GBK250BMH	0.5

32(42)-Table1

SIZE(mm)	GEAR RATIO
32	7GBK3BMH - 7GBK18BMH
42	7GBK25BMH - 7GBK180BMH

Connection Diagrams



- The direction of motor rotation is as viewed from the shaft end of the motor.
- CW represents the clockwise direction, while CCW represents the counterclockwise direction.
- Change the direction of single phase motor rotation only after bringing the motor to a stop. If an attempt is made to change the direction of rotation while the motor is rotating, the motor may ignore the reversing command or change its direction after some delay.