

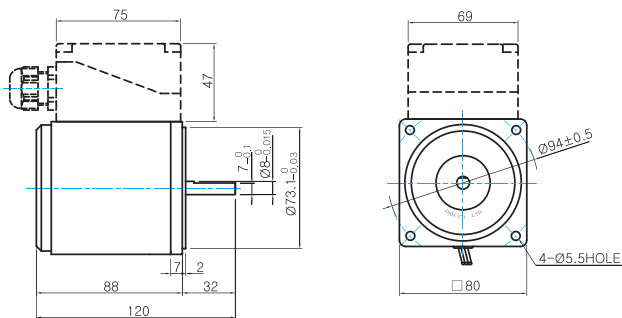
B AC Motors

Induction Motor 25W(□80mm)

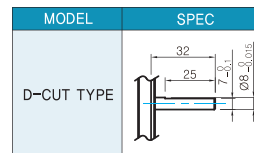
Dimensions

MOTOR ONLY

- MOTOR MODEL: 8RDD□-25(-T) (NO FAN)

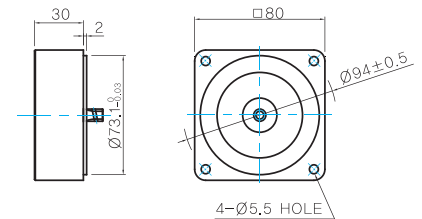


MOTOR OUTPUT SHAFT



INTER-DECIMAL GEARHEAD

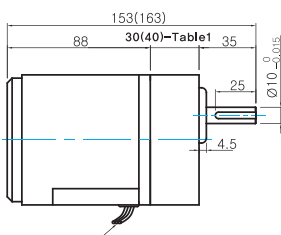
- MODEL: 8XD10M□



GEARED MOTOR

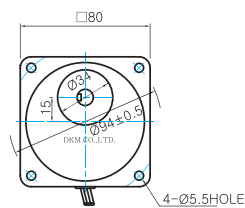
G TYPE GEARHEAD

- MOTOR MODEL: 8IDG□-25G (NO FAN)

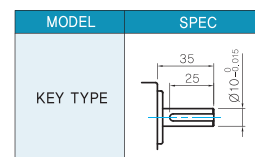


LEAD WIRE 300mm
UL STYLE NO.3271 AWG NO.22

- GEARHEAD MODEL: 8GBK□BMH



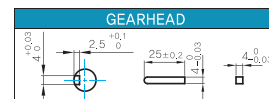
GEARHEAD OUTPUT SHAFT



30(40)-Table1

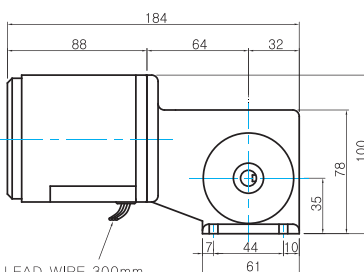
SIZE(mm)	GEAR RATIO
30	8GBK3BMH ~ 8GBK18BMH
40	8GBK25BMH ~ 8GBK360BMH

KEY SPEC



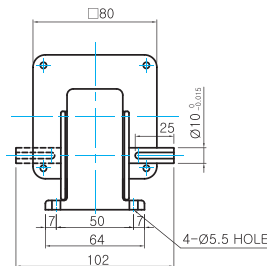
W TYPE GEARHEAD

- MOTOR MODEL: 8IDG□-25W (NO FAN)

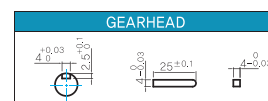


LEAD WIRE 300mm
UL STYLE NO.3271 AWG NO.22

- GEARHEAD MODEL: 8WD□BL/BR/BRL



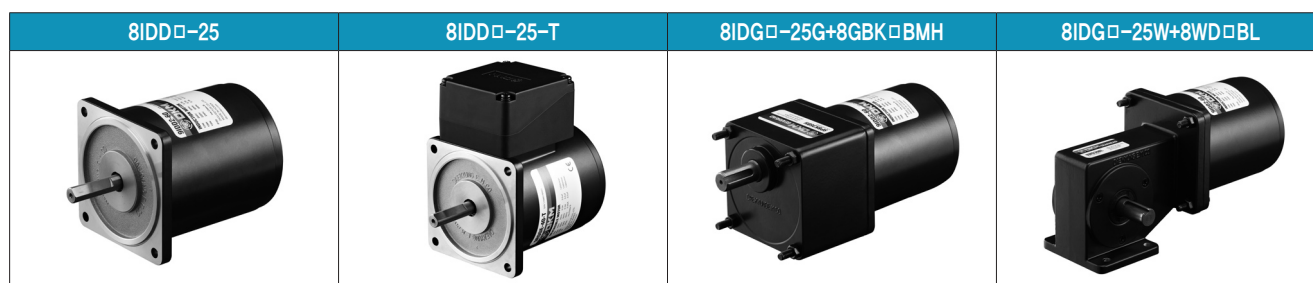
KEY SPEC



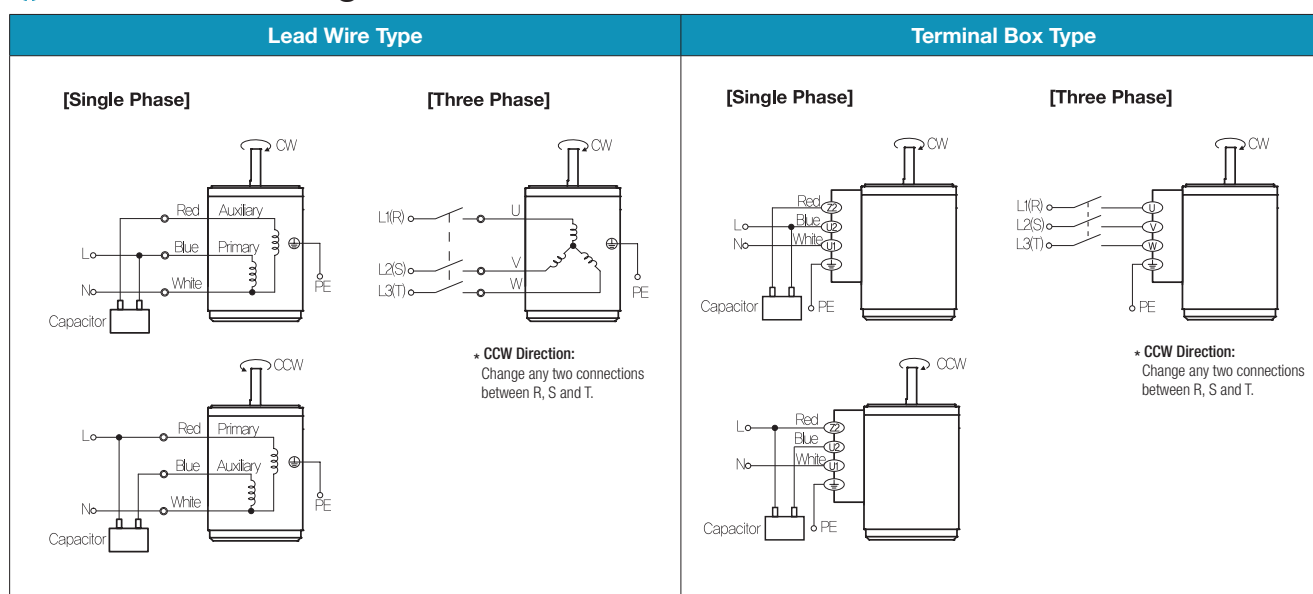
WEIGHT

	PART	WEIGHT(Kg)
GEAR HEAD	MOTOR	1.6
	8GBK3BMH ~ 8GBK18BMH	0.48
	8GBK25BMH ~ 8GBK30BMH	0.61
	8GBK36BMH ~ 8GBK180BMH	0.67
	8GBK200BMH ~ 8GBK360BMH	0.63
	8WD□BL/BR/BRL	0.67
	8XD10M□	0.44

Motor Images



Connection Diagrams



1) The direction of motor rotation is as viewed from the shaft end of the motor.

2) CW represents the clockwise direction, while CCW represents the counterclockwise direction.

3) Change the direction of single phase motor rotation only after bringing the motor to a stop. If an attempt is made to change the direction of rotation while the motor is rotating, the motor may ignore the reversing command or change its direction after some delay.