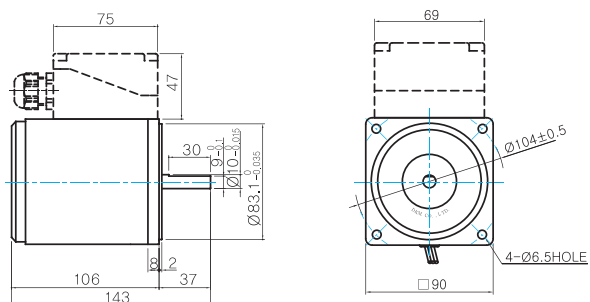


## Dimensions

### MOTOR ONLY

- MOTOR MODEL: 9IDD□-40(-T) (NO FAN)

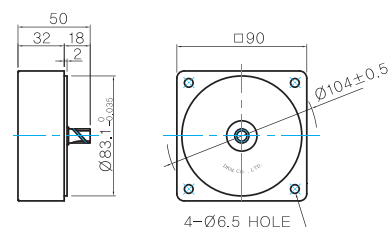


### MOTOR OUTPUT SHAFT

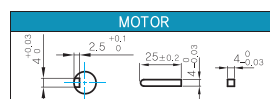
MODEL	SPEC
D-CUT TYPE	
9IDD□-40	
KEY TYPE	
9IDK□-40	

### INTER-DECIMAL GEARHEAD

- MODEL: 9XD10M□



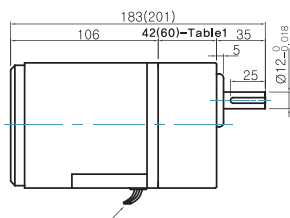
### KEY SPEC



### GEARED MOTOR

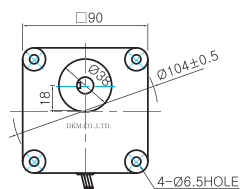
#### G TYPE GEARHEAD

- MOTOR MODEL: 9IDG□-40G (NO FAN)



LEAD WIRE 300mm  
UL STYLE NO,3271 AWG NO,22

- GEARHEAD MODEL: 9GBK□BMH



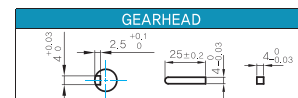
#### GEARHEAD OUTPUT SHAFT

MODEL	SPEC
KEY TYPE	

- 42(60)-Table1

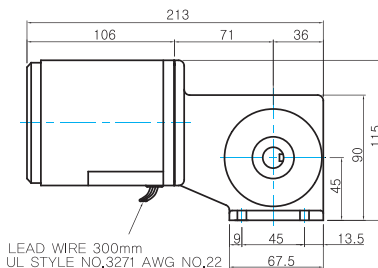
SIZE(mm)	GEAR RATIO
42	9GBK2BMH ~ 9GBK15BMH
60	9GBK18BMH ~ 9GBK180BMH

- Key Spec



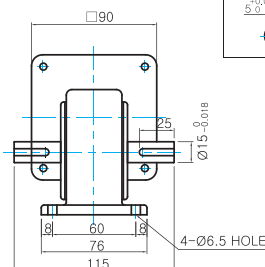
#### W TYPE GEARHEAD

- MOTOR MODEL: 9IDG□-40W (NO FAN)

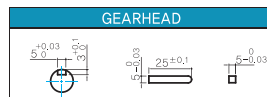


LEAD WIRE 300mm  
UL STYLE NO,3271 AWG NO,22

- GEARHEAD MODEL: 9WD□BL/BR/BRL



#### KEY SPEC



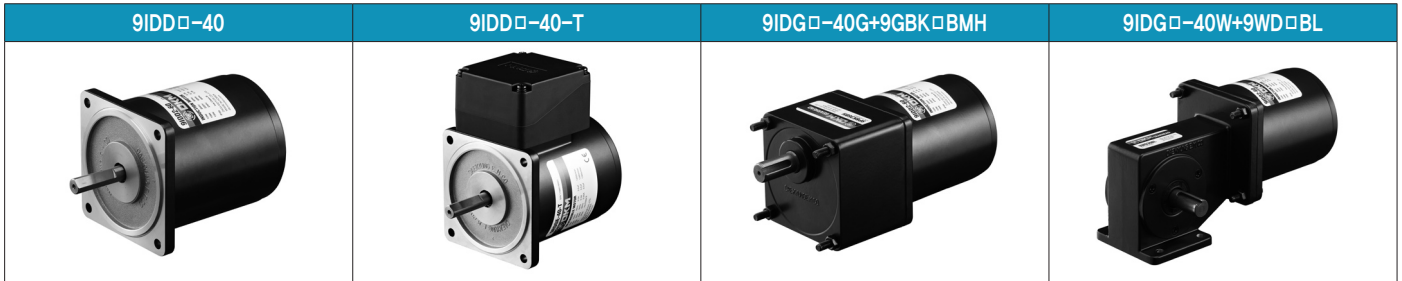
#### WEIGHT

PART	WEIGHT(Kg)	
MOTOR	2.4	
GEAR HEAD	9GBK2BMH ~ 9GBK15BMH	0.67
	9GBK18BMH ~ 9GBK30BMH	0.96
	9GBK36BMH ~ 9GBK180BMH	1.07
	9WD□BL/BR/BRL	1.0
	9XD10M□	0.5

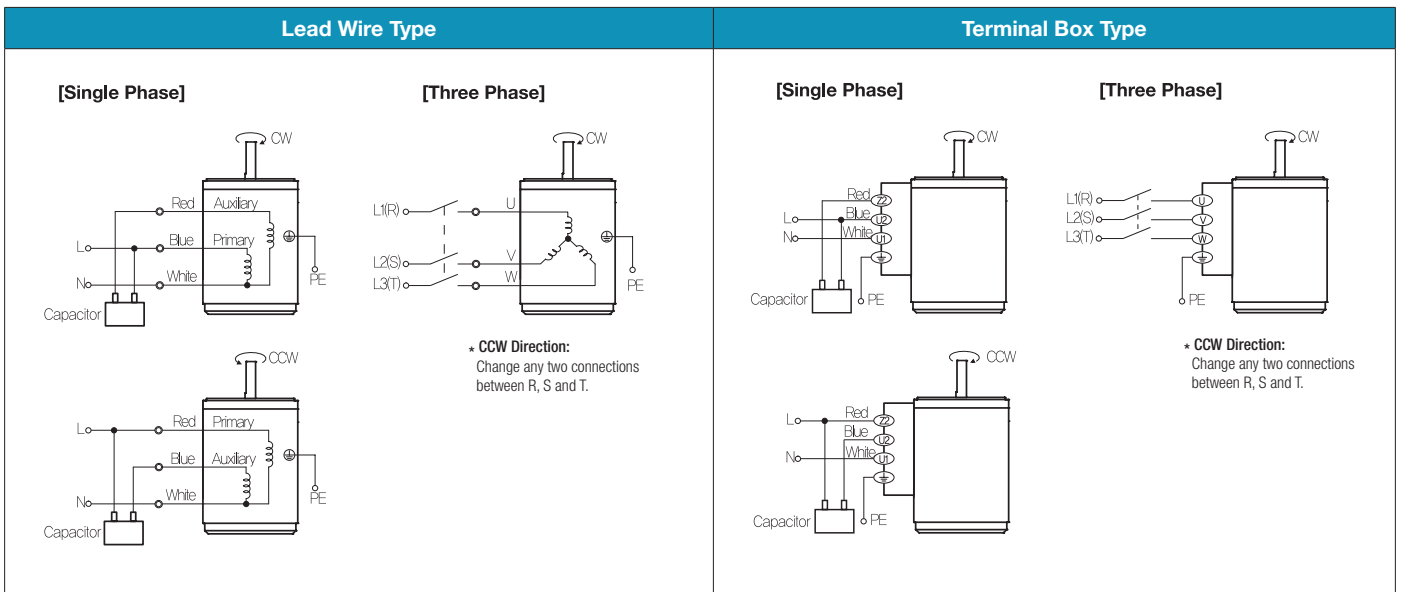
# B AC Motors

## Induction Motor 40W(□90mm)

### Motor Images



### Connection Diagrams



- 1) The direction of motor rotation is as viewed from the shaft end of the motor.
- 2) CW represents the clockwise direction, while CCW represents the counterclockwise direction.
- 3) Change the direction of single phase motor rotation only after bringing the motor to a stop. If an attempt is made to change the direction of rotation while the motor is rotating, the motor may ignore the reversing command or change its direction after some delay.