

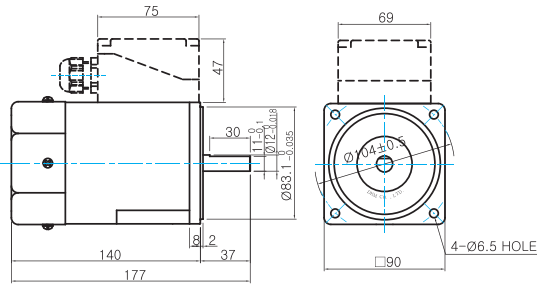
B AC Motors

Induction Motor 90W(□90mm)

Dimensions

MOTOR ONLY

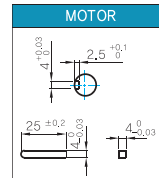
- MOTOR MODEL: 9IDD□-90F(-T) (GENERAL FAN)



MOTOR OUTPUT SHAFT

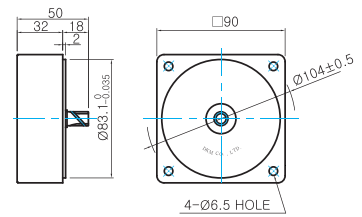
MODEL	SPEC
D-CUT TYPE	
9IDD□-90F	
KEY TYPE	
9IDK□-90F	

KEY SPEC



INTER-DECIMAL GEARHEAD

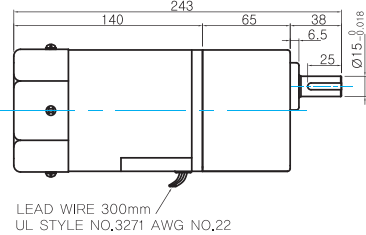
- MODEL: 9XD10M□



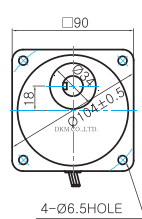
GEARED MOTOR

P TYPE GEARHEAD

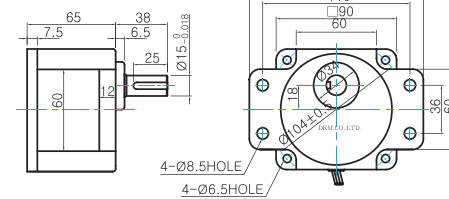
- MOTOR MODEL: 9IDG□-90FP (GENERAL FAN)



- GEARHEAD MODEL: 9PBK□BH



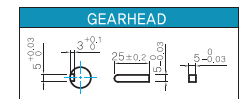
- GEARHEAD MODEL: 9PFK□BH



GEARHEAD OUTPUT SHAFT

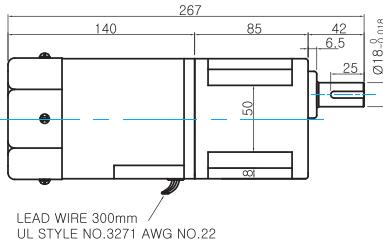
MODEL	SPEC
KEY TYPE	
9PBK□BH	
9PFK□BH	

KEY SPEC

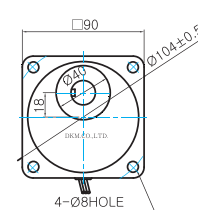


H TYPE GEARHEAD

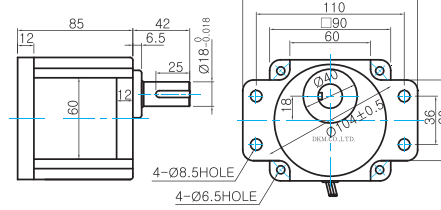
- MOTOR MODEL: 9IDG□-90FH (GENERAL FAN)



- GEARHEAD MODEL: 9HBK□BH



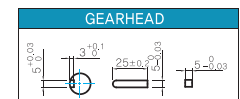
- GEARHEAD MODEL: 9HFK□BH



GEARHEAD OUTPUT SHAFT

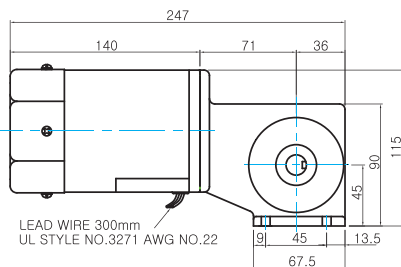
MODEL	SPEC
KEY TYPE	
9HBK□BH	
9HFK□BH	

KEY SPEC

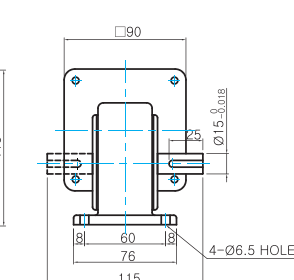


W TYPE GEARHEAD

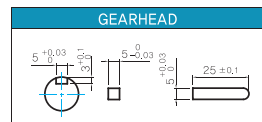
- MOTOR MODEL: 9IDG□-90FW (GENERAL FAN)



- GEARHEAD MODEL: 9WD□BL/BR/BRL

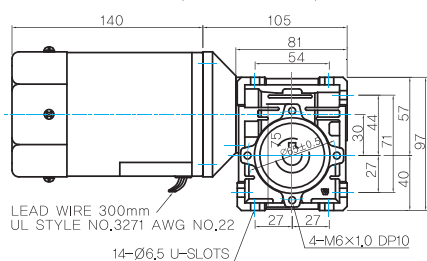


KEY SPEC

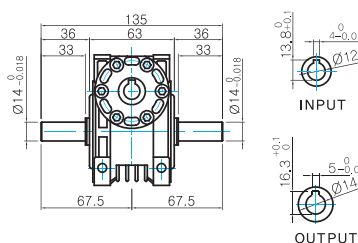


WH TYPE GEARHEAD

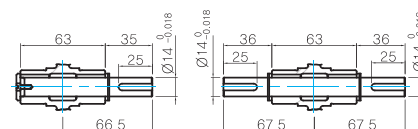
● MOTOR MODEL:
9IDG□-90FWH (GENERAL FAN)



● GEARHEAD MODEL:
9WHD□



● SHAFT(Unidirectional, Bi-directional)

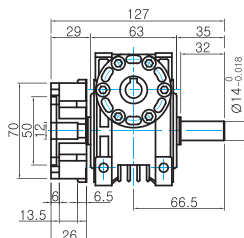
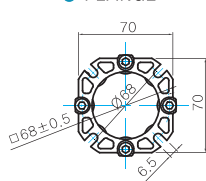


WEIGHT

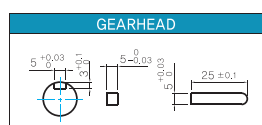
PART	WEIGHT(Kg)
MOTOR	3,0
9PB(F)K2BH ~ 9PB(F)K18BH	1,3
9PB(F)K20BH ~ 9PB(F)K180BH	1,4
9HB(F)K3BH ~ 9HB(F)K9BH	1,45
9HB(F)K12.5BH ~ 9HB(F)K18BH	1,5
9HB(F)K20BH ~ 9HB(F)K60BH	1,7
9HB(F)K75BH ~ 9HB(F)K180BH	1,8
9WD□BL/BR/BRL	1,0
9WHD□	1,13
9XD10M□	0,5

* The output flange and shafts are sold separately.

● FLANGE



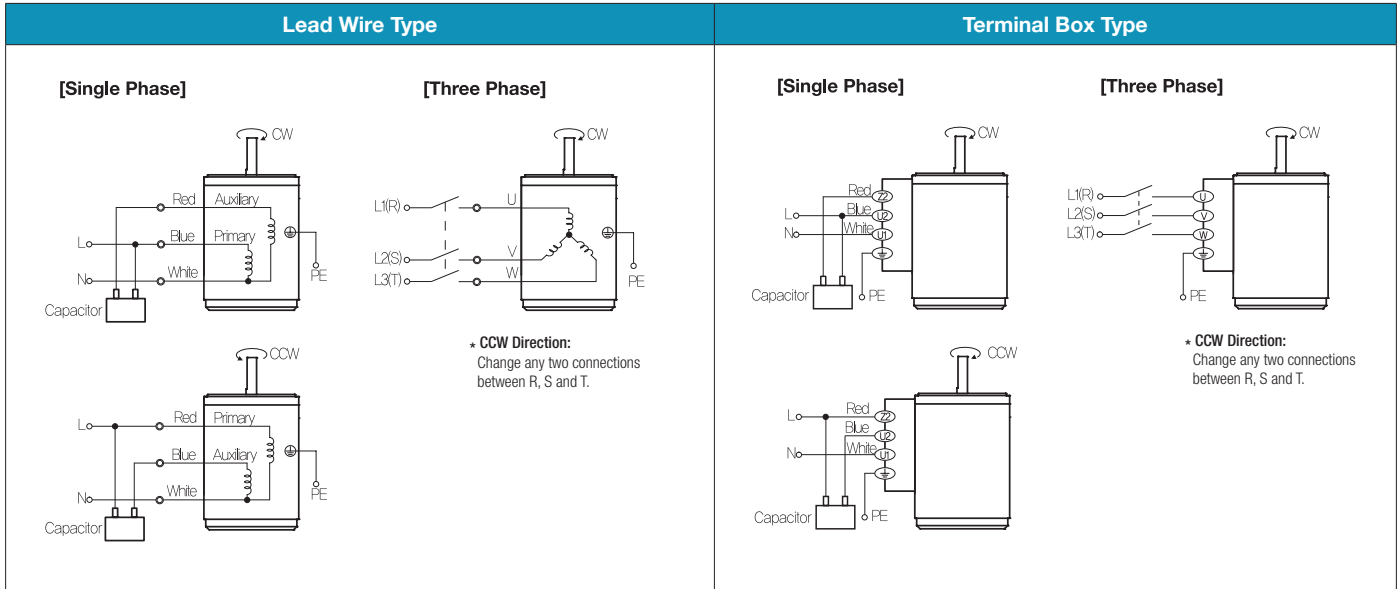
● KEY SPEC



Motor Images

9IDD□-90F	9IDD□-90F-T	9IDG□-90FP+9PBK□BH	9IDG□-90FP+9PFK□BH
9IDG□-90FH+9HBK□BH	9IDG□-90FH+9HFK□BH	9IDG□-90FW+9WD□BL	9IDG□-90FWH+9WHD□

Connection Diagrams



1) The direction of motor rotation is as viewed from the shaft end of the motor.

2) CW represents the clockwise direction, while CCW represents the counterclockwise direction.

3) Change the direction of single phase motor rotation only after bringing the motor to a stop. If an attempt is made to change the direction of rotation while the motor is rotating, the motor may ignore the reversing command or change its direction after some delay.