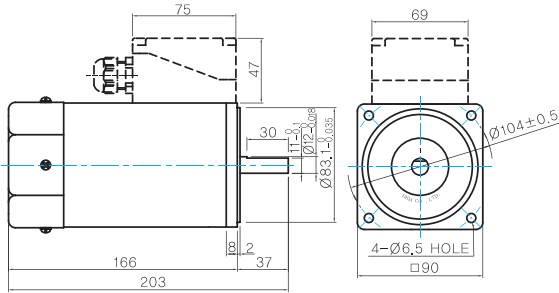


## Dimensions

### MOTOR ONLY

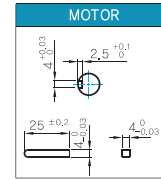
- MOTOR MODEL:  
9IDD□-180F(-T) (GENERAL FAN)



### MOTOR OUTPUT SHAFT

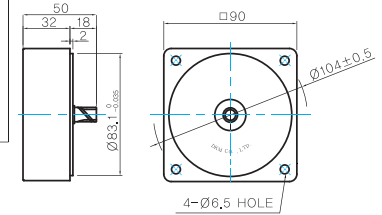
MODEL	SPEC
D-CUT TYPE	
9IDD□-180F	37 30 11±0.1 Ø12 <sup>+0.018</sup>
KEY TYPE	
9IDK□-180F	37 25 Ø12 <sup>+0.018</sup>

### KEY SPEC



### INTER-DECIMAL GEARHEAD

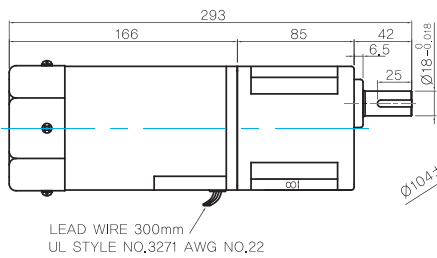
- MODEL:  
9XD10M□



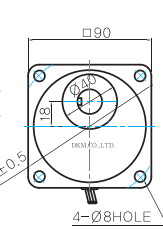
## GEARED MOTOR

### H TYPE GEARHEAD

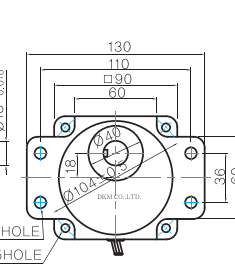
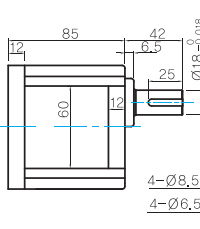
- MOTOR MODEL:  
9IDG□-180FH (GENERAL FAN)



- GEARHEAD MODEL:  
9HBK□BH



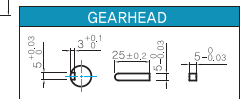
- GEARHEAD MODEL:  
9HFK□BH



- GEARHEAD OUTPUT SHAFT

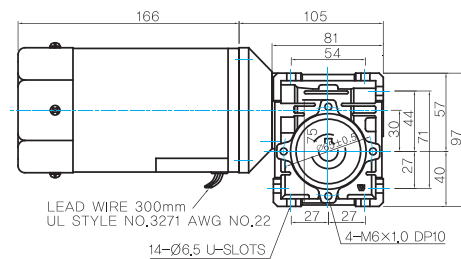
MODEL	SPEC
KEY TYPE	
9HBK□BH 9HFK□BH	42 25 Ø18 <sup>+0.018</sup>

- KEY SPEC

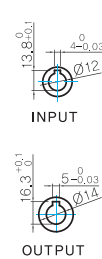
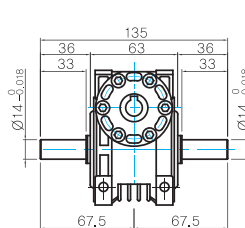


### WH TYPE GEARHEAD

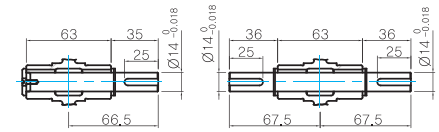
- MOTOR MODEL:  
9IDG□-180FWH (GENERAL FAN)



- GEARHEAD MODEL:  
9WHD□



- SHAFT(Unidirectional, Bi-directional)

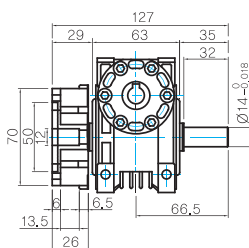
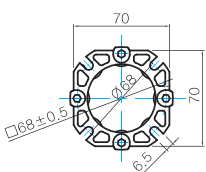


### WEIGHT

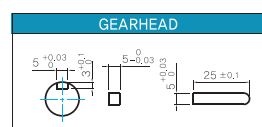
PART		WEIGHT(Kg)
MOTOR		3.8
GEAR HEAD	9HB(F)K3BH ~ 9HB(F)K9BH	1.45
	9HB(F)K12.5BH ~ 9HB(F)K18BH	1.5
	9HB(F)K20BH ~ 9HB(F)K60BH	1.7
	9HB(F)K75BH ~ 9HB(F)K180BH	1.8
	9WHD□	1.13
9XD10M□		0.5

\* The output flange and shafts are sold separately.

### FLANGE



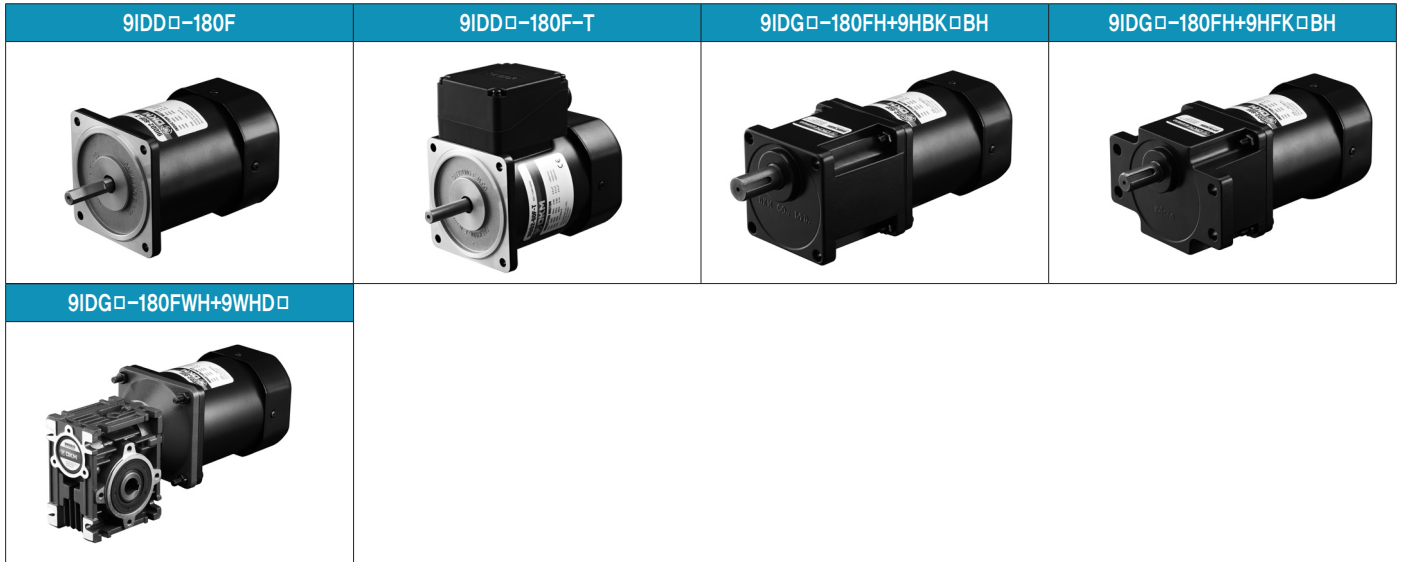
### KEY SPEC



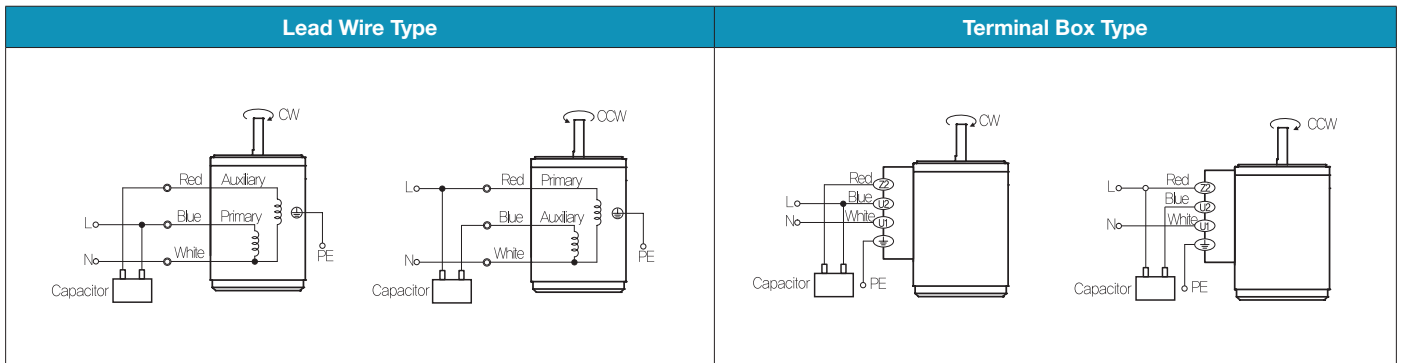
# B AC Motors

## Induction Motor 180W(□90mm)

### Motor Images



### Connection Diagrams



- 1) The direction of motor rotation is as viewed from the shaft end of the motor.
- 2) CW represents the clockwise direction, while CCW represents the counterclockwise direction.
- 3) Change the direction of single phase motor rotation only after bringing the motor to a stop. If an attempt is made to change the direction of rotation while the motor is rotating, the motor may ignore the reversing command or change its direction after some delay.