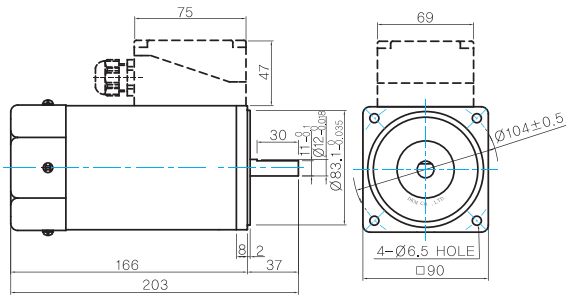


Dimensions

MOTOR ONLY

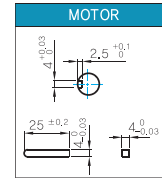
- MOTOR MODEL:
9IDD□-200F(-T) (GENERAL FAN)



MOTOR OUTPUT SHAFT

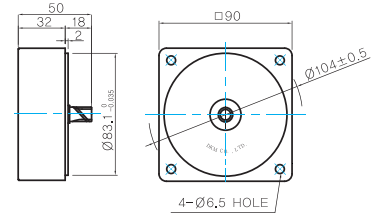
MODEL	SPEC
D-CUT TYPE	
9IDD□-200F	
KEY TYPE	
9IDK□-200F	

KEY SPEC



INTER-DECIMAL GEARHEAD

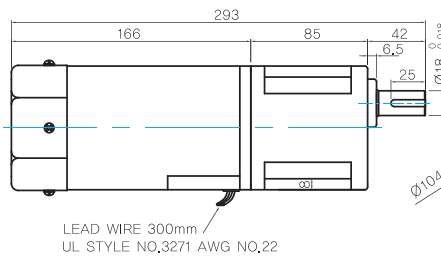
- MODEL:
9XD10M□



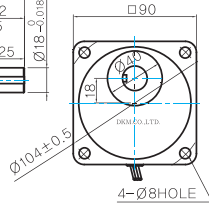
GEARED MOTOR

H TYPE GEARHEAD

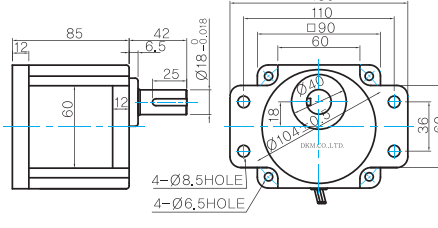
- MOTOR MODEL:
9IDG□-200FH (GENERAL FAN)



- GEARHEAD MODEL:
9HBK□BH



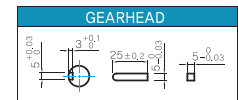
- GEARHEAD MODEL:
9HFK□BH



GEARHEAD OUTPUT SHAFT

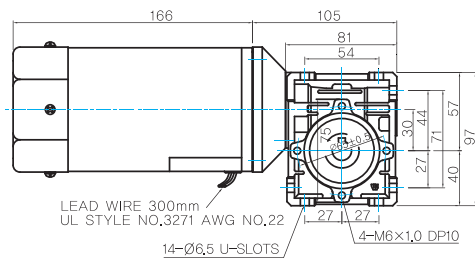
MODEL	SPEC
KEY TYPE	
9HBK□BH	
9HFK□BH	

KEY SPEC

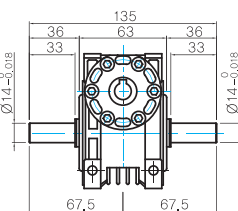


WH TYPE GEARHEAD

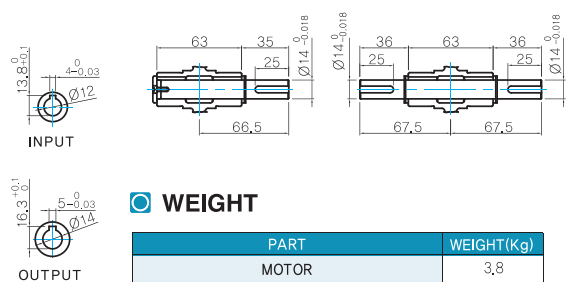
- MOTOR MODEL:
9IDG□-200FWH (GENERAL FAN)



- GEARHEAD MODEL:
9WHD□



SHAFT(Unidirectional, Bi-directional)

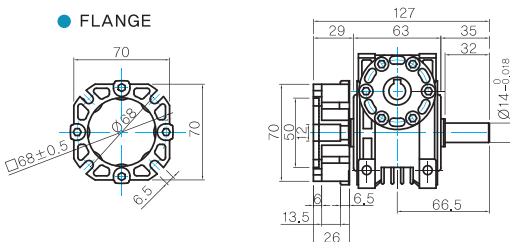


WEIGHT

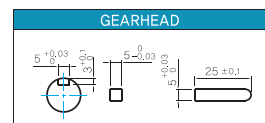
PART		WEIGHT(Kg)
MOTOR		3,8
GEAR HEAD	9HB(F)K3BH ~ 9HB(F)K9BH	1,45
	9HB(F)K12.5BH ~ 9HB(F)K18BH	1,5
	9HB(F)K20BH ~ 9HB(F)K60BH	1,7
	9HB(F)K75BH ~ 9HB(F)K180BH	1,8
	9WHD□	1,13
9XD10M□		0,5

* The output flange and shafts are sold separately.

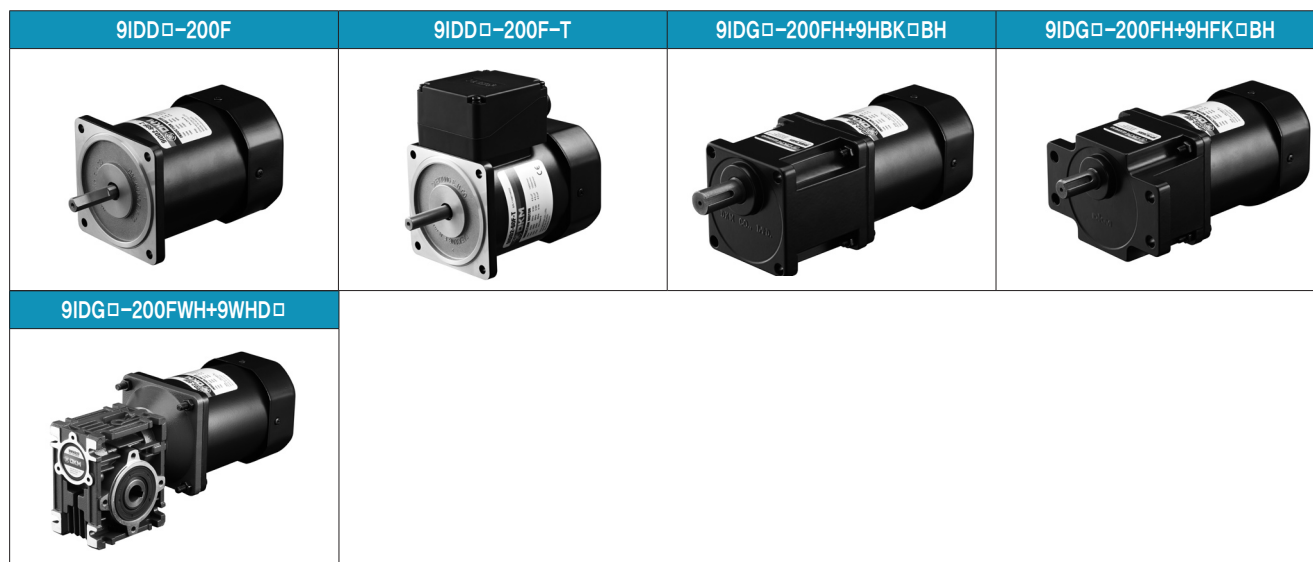
FLANGE



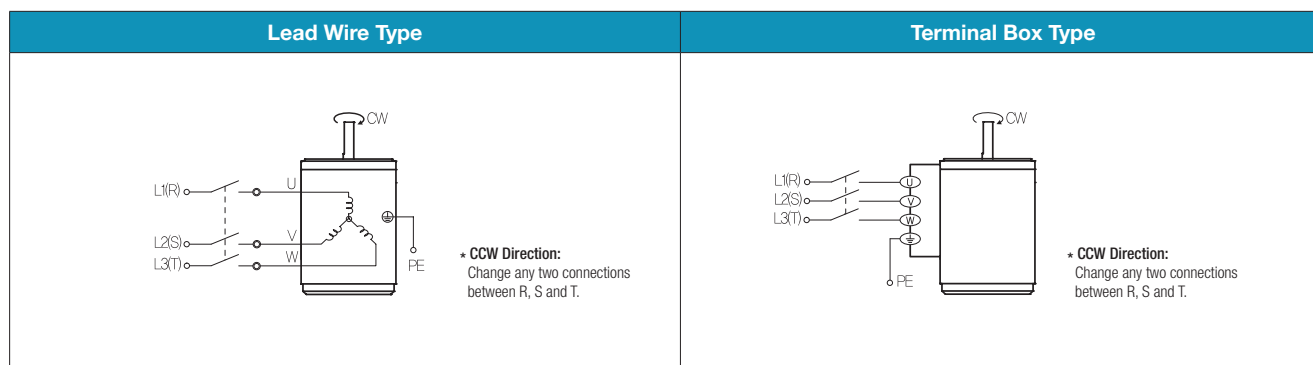
KEY SPEC



Motor Images



Connection Diagrams



- 1) The direction of motor rotation is as viewed from the shaft end of the motor.
- 2) CW represents the clockwise direction, while CCW represents the counterclockwise direction.